

YEAR 2007

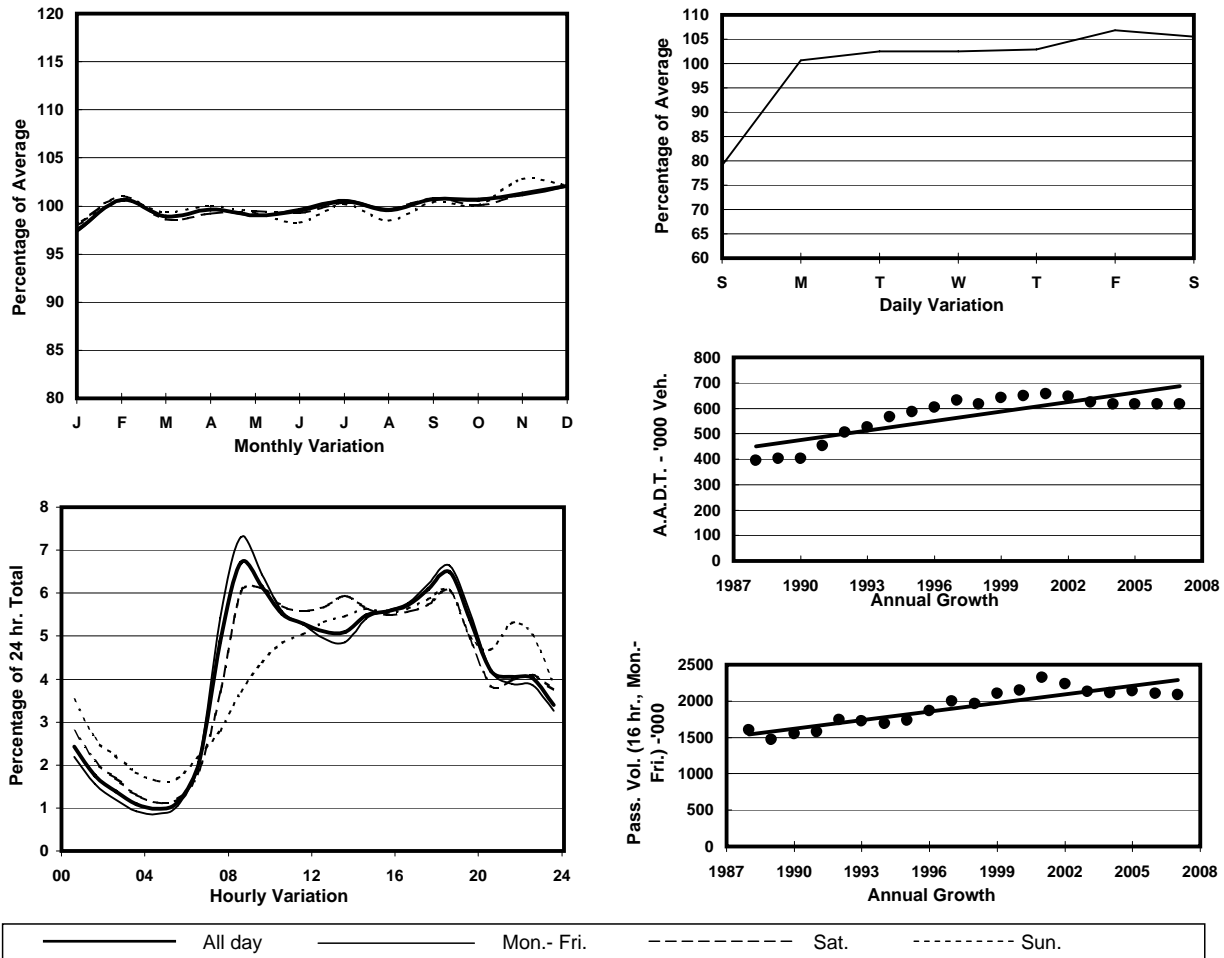
Location

Kowloon External Cordon(Kolwoon Urban Area Boundary)

Stations on Cordon/Screenline

4201, 5017, 5021, 5022, 5023, 5024, 5026, 5030, 6203, 6204 and 6214

1. TRAFFIC FLOW VARIATION AND GROWTH



2. TRAFFIC CHARACTERISTICS (BY DIRECTION)

Parameter	All - Day	Mon. - Fri.	Sat.	Sun.
SOUTH BOUND				
A.A.D.T.	311440	324930	332800	247260
R 12 / 24 - %	71.6	73.1	70.4	63.5
R 16 / 24 - %	86.8	87.9	85.4	81.8
AM Peak Hour	0800-0900	0800-0900	0800-0900	0900-1000
One-way flow at AM peak hour	24430	27720	23960	12160
T - % (AM)	-	19.8	-	-
PM Peak Hour	1800-1900	1800-1900	1800-1900	1800-1900
One-way flow at PM peak hour	19530	20490	19970	15820
T - % (PM)	-	16.4	-	-
Prop.of commercial vehicles - 16 hr.	-	20.1	-	-

NORTH BOUND				
A.A.D.T.	305620	318080	326080	246950
R 12 / 24 - %	64.5	65.7	64.1	57.3
R 16 / 24 - %	84.7	85.9	82.9	79
AM Peak Hour	0800-0900	0800-0900	0900-1000	0900-1000
One-way flow at AM peak hour	16900	19180	17150	9530
T - % (AM)	-	19.5	-	-
PM Peak Hour	1800-1900	1800-1900	1800-1900	1700-1800
One-way flow at PM peak hour	20550	22270	20000	14330
T - % (PM)	-	17.5	-	-
Prop.of commercial vehicles - 16 hr.	-	20.6	-	-

3. OTHER INFORMATION AND COMMENT

Kowloon External Cordon
Year 2007

4. Vehicle classification and occupancy - Monday to Friday

Time		Class of vehicle									
		Motor	Private	Taxi	Private	PLB	Goods veh.		Non	Fr. Bus	
		Cycle	Car		LB		Light	M & H	Fr. Bus	SD	DD
0700-0800	Pro	4.6	30.0	16.7	1.5	3.8	20.0	11.8	6.7	0.1	4.9
	Ocp	1.1	1.5	1.9	4.1	12.3	1.5	1.1	17.2	15.4	54.7
0800-0900 Peak Hour	Pro	3.9	41.9	13.5	1.1	3.0	17.4	11.0	4.5	0.1	3.8
	Ocp	1.1	1.4	1.9	5.4	13.2	1.6	1.3	22.0	10.9	59.9
0900-1000	Pro	2.3	35.6	14.1	0.9	2.4	24.7	13.9	2.1	0.1	3.9
	Ocp	1.0	1.4	1.8	2.6	10.8	1.6	1.2	12.2	6.2	33.9
1000-1100	Pro	2.1	28.8	12.4	1.0	2.7	29.8	17.7	1.4	0.1	4.0
	Ocp	1.1	1.4	1.8	2.3	9.0	1.5	1.3	10.0	8.0	26.9
1100-1200	Pro	2.5	28.9	10.9	1.5	2.6	30.9	17.2	1.7	0.1	3.8
	Ocp	1.1	1.4	1.8	2.5	8.2	1.5	1.3	9.2	10.2	27.3
1200-1300	Pro	2.5	29.8	12.0	1.3	2.6	28.0	17.3	2.4	0.1	4.0
	Ocp	1.1	1.5	1.8	4.3	8.4	1.5	1.3	12.0	8.9	28.0
1300-1400	Pro	2.5	30.2	10.2	1.3	2.9	28.8	17.7	2.3	0.1	4.0
	Ocp	1.1	1.4	1.9	3.3	8.7	1.5	1.2	12.1	8.3	29.2
1400-1500	Pro	2.4	29.6	9.7	1.4	2.3	30.7	17.7	2.5	0.1	3.6
	Ocp	1.1	1.5	1.9	2.4	8.6	1.5	1.3	11.5	8.9	27.8
1500-1600	Pro	2.2	31.9	10.4	1.3	1.9	30.7	15.9	2.3	0.1	3.4
	Ocp	1.1	1.5	1.8	3.4	9.7	1.5	1.2	11.3	7.1	29.4
1600-1700	Pro	2.9	31.6	12.7	1.5	2.1	27.3	14.6	3.5	0.1	3.8
	Ocp	1.1	1.5	1.7	3.3	11.5	1.5	1.2	10.1	9.5	34.0
1700-1800	Pro	4.1	35.9	11.5	1.4	2.6	24.7	12.3	3.1	0.1	4.4
	Ocp	1.1	1.5	1.8	3.0	11.8	1.6	1.2	12.4	11.1	43.4
1800-1900	Pro	4.5	46.0	10.7	0.7	3.6	17.7	9.6	3.2	0.1	4.0
	Ocp	1.1	1.5	1.9	3.7	14.5	1.6	1.2	21.9	16.3	60.3
1900-2000	Pro	3.5	50.5	13.0	0.5	4.2	13.1	8.7	2.3	0.1	4.1
	Ocp	1.1	1.4	1.9	2.2	13.1	1.5	1.1	22.3	8.3	50.0
2000-2100	Pro	3.8	47.3	17.8	0.3	4.6	10.7	9.0	1.7	0.1	4.7
	Ocp	1.2	1.4	1.8	2.4	11.2	1.5	1.2	15.4	8.9	35.2
2100-2200	Pro	3.3	44.5	21.5	0.3	4.5	10.1	8.4	2.1	0.1	5.2
	Ocp	1.2	1.5	1.8	3.6	9.9	1.5	1.1	13.3	11.0	31.2
2200-2300	Pro	3.5	46.6	23.9	0.3	4.8	7.4	6.9	1.5	0.1	5.2
	Ocp	1.2	1.6	1.7	2.9	9.6	1.4	1.1	13.5	8.7	33.7
16 hours	Pro	3.2	36.7	13.4	1.1	3.1	22.5	13.2	2.8	0.1	4.1
	Ocp	1.1	1.5	1.8	3.3	11.0	1.5	1.2	15.4	9.9	39.1

Legend

- Pro.** Proportion of vehicles in % (Sum may not add up to 100% due to figure rounding)
- Ocp.** Average occupancy of vehicles
- M & H** Medium and Heavy